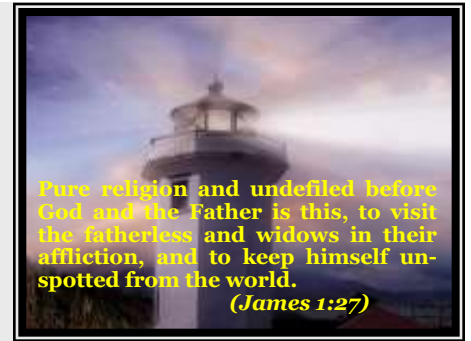


**Jun,  
2023**

## THROUGH THE STORM MINISTRIES

P.O. Box 14723 Humble, TX 77347  
(281)358-0169

Web: [www.throughthestorm.org](http://www.throughthestorm.org)  
Email: [tsm@throughthestorm.org](mailto:tsm@throughthestorm.org)  
[www.facebook.com/HavenOnTheHill](http://www.facebook.com/HavenOnTheHill)



**Dear friends and partners:**

Again we want to say **"THANK YOU"** for your prayers and financial support. Because of your faithfulness we continue to grow and spread the love and salvation of Jesus Christ.

### **Phil's April/May trip to Kenya**

I purposely timed my trip to Kenya to coincide with the school term break of all of our Haven family. We had a great time of catching up, mentoring and worshipping.

About two weeks into my stay, Pastor Matt and Jim from Pennsylvania and Anthony from Fort Worth joined us at Haven for their "mission trip". We all had great fellowship with the boys and with each other.

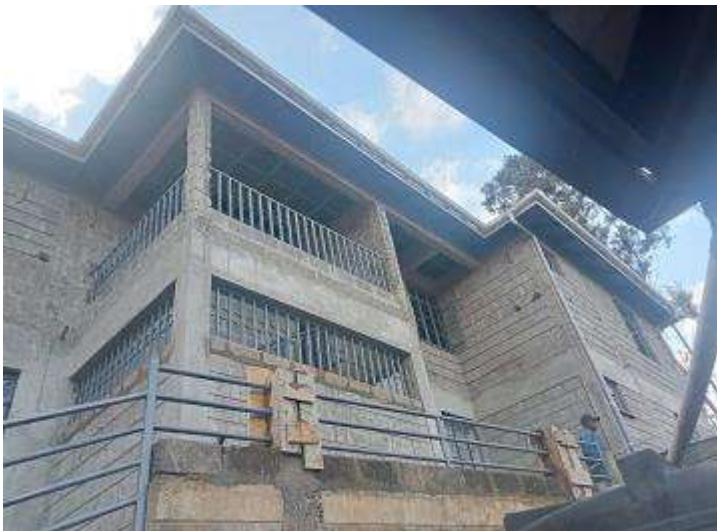
Haven hosted a one-day Pastor's conference where Matt & Jim each shared with the pastors and the pastors ministered to the Haven boys.

Someone at Pastor Matt's church provided for the Haven family to enjoy a meal of pizza. (Getting pizza to haven requires a three hour round trip to Thika.)

Jim used his expert talents in welding for badly needed repair of our playground equipment as well as replacing our broken down wooden storage rack with a sturdy, durable rack made of steel.

Anthony was popular with the boys and spent much time interfacing with them.

My time was also spent with coordinating repairs and computer upgrades, and continuing construction on our new building and other management activities. **Phil**



**The new building with door/window frames & railings**

***We love and appreciate you!! Thank you for all you do.  
We could not do this without your prayers and support!  
(Little by Little makes a bunch)***

### **Construction**

The steel window frames, doors and safety railings on the top floor of our new building have been installed.

The next phase is exterior window sills, soffit under the roof and exterior stone wall "keying" (see chart on back.)

The initial primary purpose of the upper floor is to provide a place for visiting mission teams to stay, while spreading the love and salvation of Jesus to the community.

***Have I not commanded you? Be strong and of good courage; do not be afraid, nor be dismayed, for the Lord your God is with you wherever you go. (Joshua 1:9)***

As I read this scripture it made me think about a time when Phil and I were traveling late in the evening with friends in a matatu (a mini van used for public transportation in Kenya.) The matatu driver, trying to get us home before dark, was going way too fast. It took a sharp turn and ended up in a ditch with the tires mired in mud.

We all unloaded looking around for any wild animals that might be seeking an early dinner. The men took a shovel out and started to dig the tires out of the mud until the shovel broke! Phil came over to me and said "Ladies, you better start praying. This could get serious." **We were in the middle of nowhere and I knew that if the wild animals didn't get us, the Kenya road bandits would.**

A few weeks earlier, the Lord spoke to me and said ***"If you act like you have no God, then you might as well not have one, because I can do nothing as long as you have no faith that I will. You know I can, but if you don't think I will, I can't, because it is impossible to act without your faith."*** Standing in that dirt road, we held hands and spoke the Word of God. **"Lord, You promise to be with us wherever we go"** and we ask and believe that You will make a way where there seems to be no way, in Jesus' name."

We said amen and looked up to see what at first I thought was a vision. Coming down the road in the middle of nowhere was a huge road grader. He pulled us out and we got home safe. God is faithful! **Janice**

### **Current needs. Your prayers are important! (James 5:16):**

- Continued safety of our Haven family and community.
- Funding for the finishing of the new building. External window sills, soffit & stone keying (\$1,200). Approximate finishing and furnishing costs (\$31,487).
- For all our boys and young men, that they continue to walk in the nurture and admonition of the Lord. (Ephesians 6:4).

### Haven building construction and funding status

Phase	Description	Status/Amount needed
1	Soil excavation	Complete
2	Sub-structure, including the concrete basement enclosure and ground floor slab, electric conduits and plumbing inlets/outlets	Complete
3	Septic digester for 100 – 200 people (The existing septic system is at capacity.)	Complete
4	Basement finishing and furniture.	Complete
5	Ground floor walling	Complete
6	Superstructure, including concrete ring beams on top of ground floor walls and concrete ground floor ceiling	Complete
7	Ground floor finishing, including doors, windows, plastering, flooring, painting, electrical	Complete
8	Top floor walling and ring beam structure	Complete
8.5	Roof and gutters	Complete
9.1	Rainwater storage tank foundation and relocation	Complete
9.2	Steel windows, doors, stair rails, grills, internal & external wood frames	Complete
9.6	Window sills & eaves, soffits, exterior keying	\$1,200-Partially funded
10	Top floor finishing	\$15,417 (Est)-Not funded
11	Final landscaping, including stairs, walkways, cabinets	\$9,870-Not funded
12	Beds, Furniture, Curtains (top floor)	\$5,000 (Est)-Not funded
* Dollar amounts will vary, depending on exchange rates and cost of materials.		Total needed * \$31,487

We are here



Godfrey, James Nganga and Joshua in 2023



Phil with Godfrey, James Nganga and Joshua in 2008

**When you choose to sponsor one of these children for \$10 or more per month, you are changing a life forever!**

[www.throughthestorm.org/children.php](http://www.throughthestorm.org/children.php)

[www.throughthestorm.org](http://www.throughthestorm.org)  
[tsm@throughthestorm.org](mailto:tsm@throughthestorm.org)  
[www.facebook.com/HavenOnTheHill](https://www.facebook.com/HavenOnTheHill)